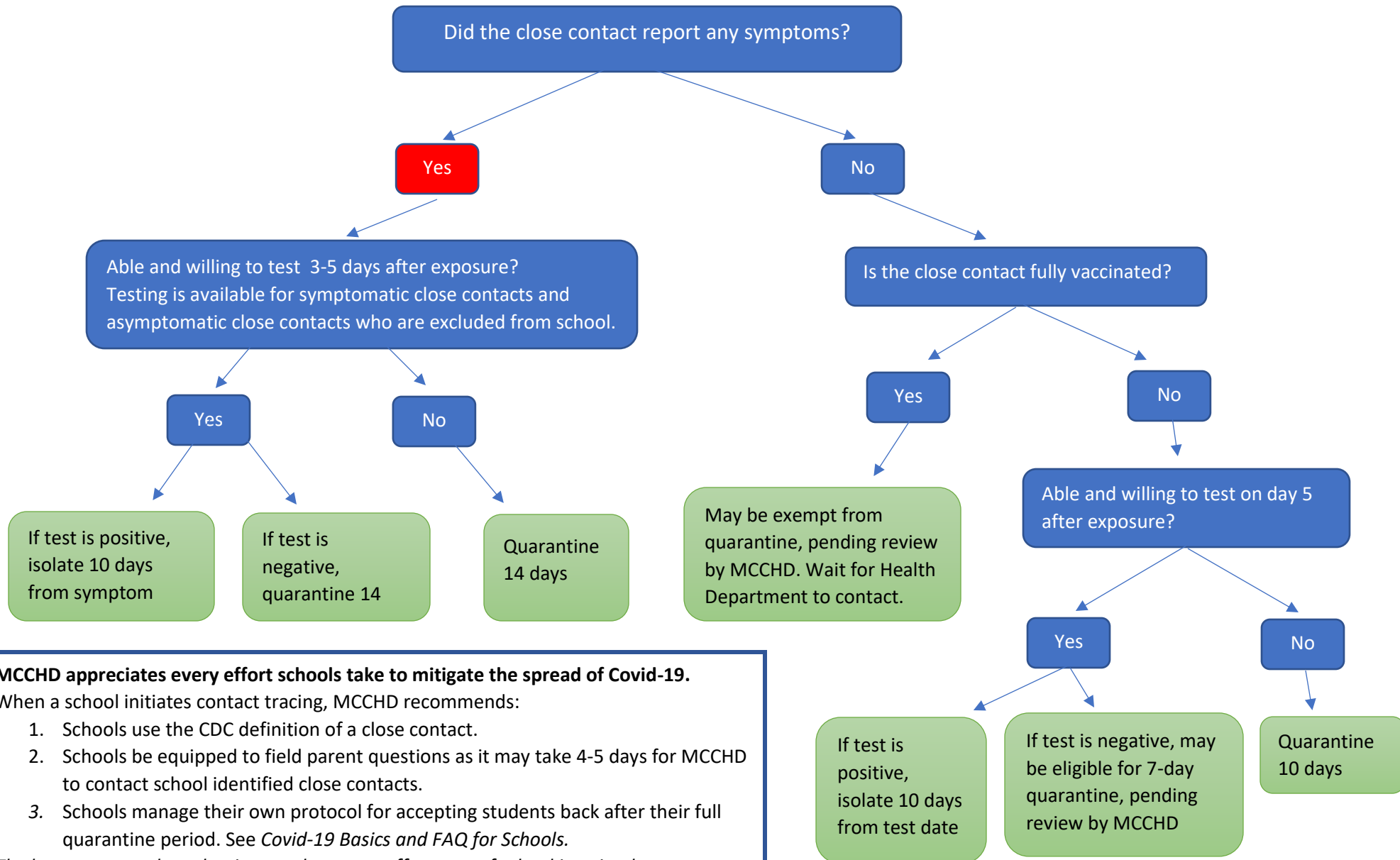


Quarantine Timeframe Decision Tree for School Identified Close Contacts



MCCHD appreciates every effort schools take to mitigate the spread of Covid-19.

When a school initiates contact tracing, MCCHD recommends:

1. Schools use the CDC definition of a close contact.
2. Schools be equipped to field parent questions as it may take 4-5 days for MCCHD to contact school identified close contacts.
3. Schools manage their own protocol for accepting students back after their full quarantine period. See *Covid-19 Basics and FAQ for Schools*.

The best way to reduce the time students or staff are out of school is to implement infection control measures: wear masks, socially distance, and encourage vaccination.